



SAGECLIFFE  
— RESIDENCES —  
WASHINGTON STATE

Realogics

Sotheby's  
INTERNATIONAL REALTY

[www.sagecliffesresidences.com](http://www.sagecliffesresidences.com)





COME FIND YOUR EXPERIENCE



## The resort was initially founded on a vision to blend humans and nature, nestled upon cliff-sides overlooking the Columbia River in central Washington State.

**The resort began as a boutique Inn, designed by award-winning architects, Olson Kundig, who embraced the landscape.**

Over its past 19 years, the resort has grown to encompass over 180 acres, from a cliff-side desert plateau to the Columbia River waterfront. Being located within the heart of Washington State and less than a 2.5-hour drive from Seattle, Spokane or Tri-Cities it's becoming a go-to destination for those who know about it.

With 300-plus days of sunshine per year, connected to over 6,500 acres of public lands & trails set amongst farmlands, vineyards & a one-of-a-kind topography, the resort is transforming into a unique, outdoor oasis where couples & friends find their experience and create memories that will last a lifetime.

To modernize and enhance the guest experience, over the past four years, a new resident winery has been developed, Sagecliff Cellars, with award

winning Cabernet Sauvignon, a whiskey bar, Fox & Quail, has been constructed, five pickleball and two tennis courts have been built, trails have been enhanced, The Spa at Sagecliff has been reimaged with holistic treatments with top brands, and a collaboration with one of the nation's top music venues, The Gorge Amphitheatre, has been crafted.

To take the resort to the World Stage, Sagecliff Residences, is being launched. Sagecliff Residences are a variety of private homes that will provide owners with perpetual income while encompassing this thriving resort experience. The homes are in a once-in-a-lifetime location surrounded by once-in-a-lifetime experiences.

**We look forward to welcoming you,  
Sagecliff Residences & Sotheby's International Realty**



*"With the launch of Sagecliff Residences, we're turning our long-held vision into a stunning reality, that one day, will be unparalleled anywhere in the world. The potential experiential value of this location is off-the-charts, and we will continue to bring it to life!" —*

Vince Coluccio & Rachel Moorhouse, Sagecliff Residences

Love People, Love Music, Love Life, **Love More.**™



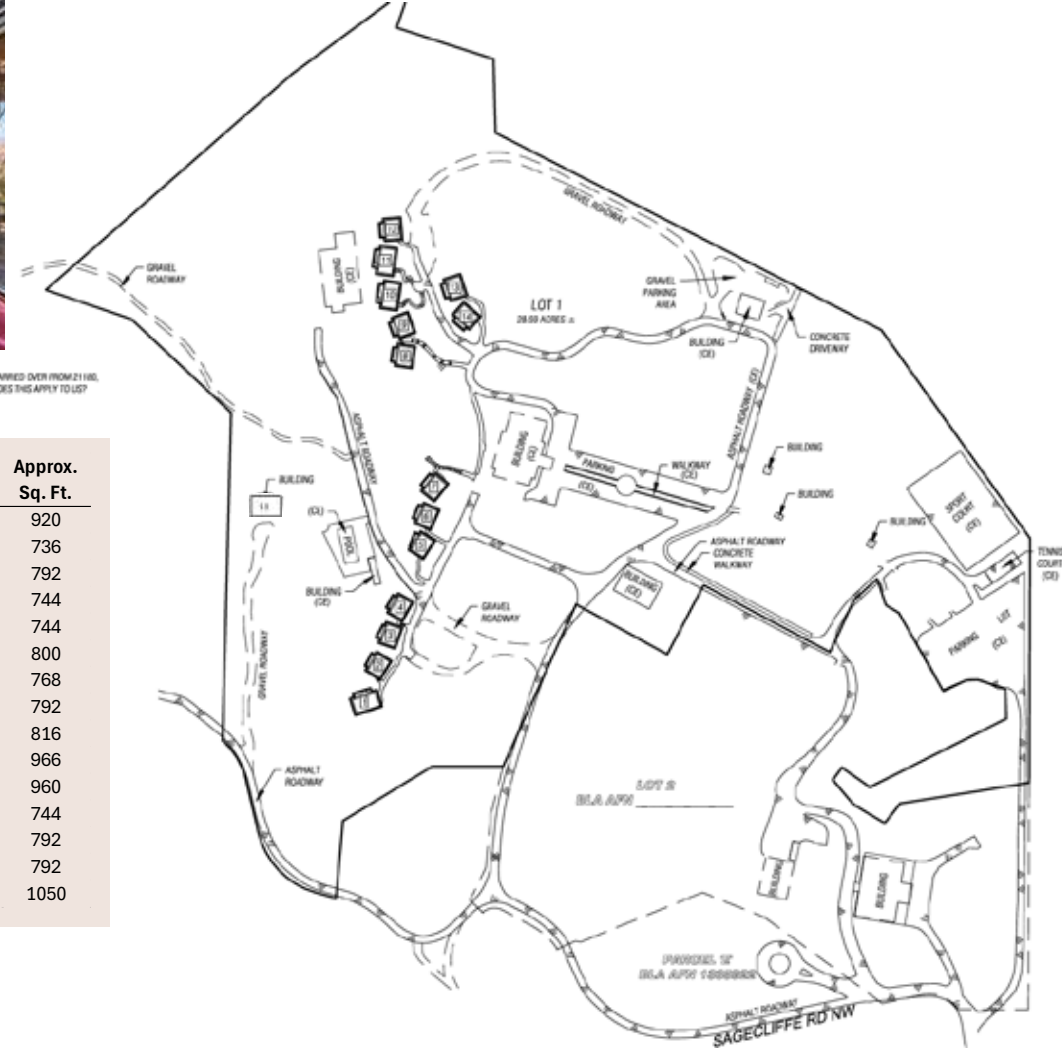
15 CASITAS



Olson Kundig | Realogics | Sotheby's  
INTERNATIONAL REALTY



# CASITA DETAIL



CARRIED OVER FROM 21 HILL  
SIZES THIS APPLY TO US?

Casita #	# of Bedroom(s) / Studio (S)	# of Beds	Bed Type	Approx. Dim (ft.)	Approx. Sq. Ft.
1	1	2	K/Q	23' x 40'	920
2	S	1	K	23' x 32'	736
3	S	1	K	24' x 33'	792
4	S	1	K	24' x 31'	744
5	S	1	K	24' x 31'	744
6	S	1	K	25' x 32'	800
7	S	1	K	24' x 32'	768
8	S	1	K	24' x 33'	792
9	S	1	K	24' x 34'	816
10	2	3	K/Q/Q	23' x 42'	966
11	1	2	K/Q	24' x 40'	960
12	S	1	K	24' x 31'	744
13	S	1	K	24' x 33'	792
14	S	1	K	24' x 33'	792
15	2	3	K/Q/Q	25' x 42'	1050





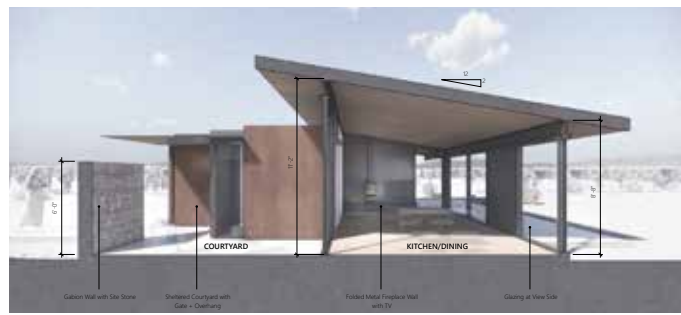


COURTYARD VIEW ▲



FLOOR PLAN ▲

ENTRY ▼



SECTION ▲



SECTION ▼





SAGECLIFFE RESORT'S MASTER PLAN



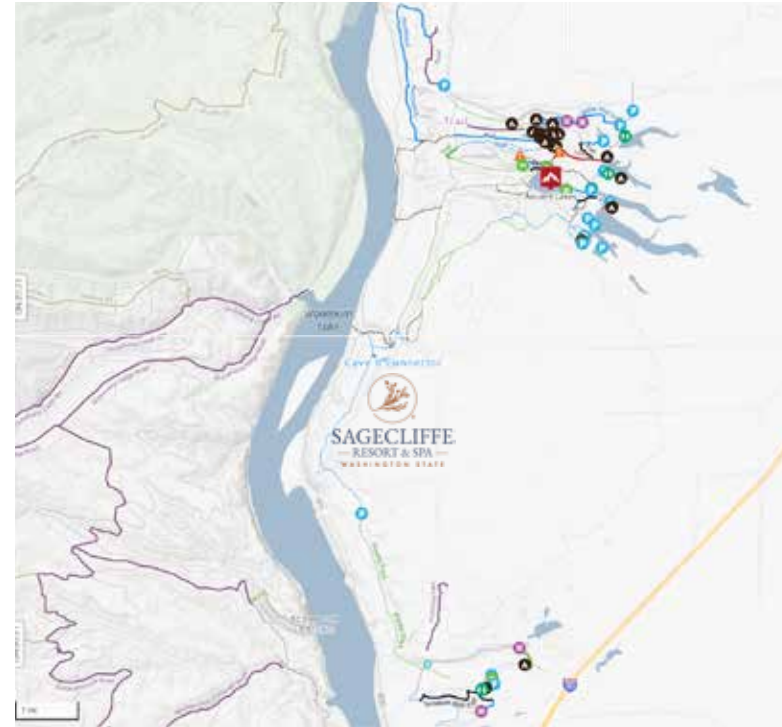
CLIFF CLUB SITE PLAN



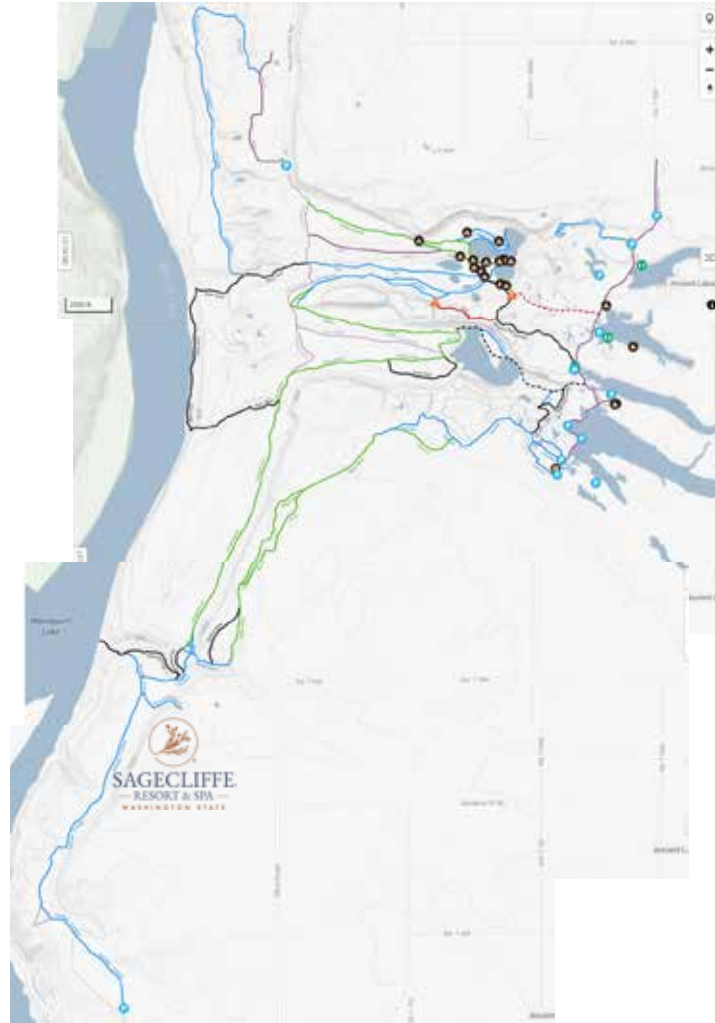




HIKING TRAILS ▼



BIKING TRAILS ▼





# AMENITIES AROUND SAGECLIFFE RESORT











CONSIDERED CONSTRUCTION AND THOUGHTFUL DESIGN



## Internationally renowned Architects Olson Kundig designed the Resort.

The Olson Kundig design team worked closely with the client to create a language of architectural forms and materials that drew from the natural landscape of Central Washington.

The design seeks to engage history through a respectful use of natural materials, forms sympathetic to the natural setting and environmentally conscious

design. Building placement and site planning were informed by topographical and geological conditions, particularly the basalt cliffs, rocky outcroppings and talus. Stone for the buildings was harvested on site and cast into concrete forms.

Olson Kundig

### FAQ'S



Scan THE QR CODE TO VIEW FAQ'S



Jolene Messmer

Loan Officer | NMLS 379952

Jolene.Messmer@movement.com

(425) 445-1945

JOLENEMESSMER.COM

MORTGAGE  
PLAYBOOK



SCAN TO LEARN MORE



## TAP INTO YOUR EXCLUSIVE BUILDER BENEFITS

### SAGECLIFFE | MOVEMENT MORTGAGE Preferred Lender Perks



10 Investors



20 Loan Options



Unlock Your Home Equity



Condotel Financing

Everyone deserves Home Ownership,  
ready when you are.

Learn your options and call, text or email.



11255 Kirkland Way Ste 110, Kirkland, WA 98033 | WA-MLO-379952; | Movement Mortgage LLC. All rights reserved. NMLS ID #39179 (For licensing information, go to: <http://www.nmlsconsumeraccess.org>). Additional information available at [movement.com/legal](http://movement.com/legal). Interest rates and products are subject to change without notice and may or may not be available at the time of loan commitment or lock-in. Borrowers must qualify at closing for all benefits.





SAGECLIFFE  
— RESIDENCES —  
WASHINGTON STATE

Realogics | Sotheby's  
INTERNATIONAL REALTY



Located less than a 2.5-hour drive from Seattle, Spokane or Tri-Cities.  
Take exit 143, Silica Road, from both I-90 East and West.

*Thank you*

[WWW.SAGECLIFFERESIDENCES.COM](http://WWW.SAGECLIFFERESIDENCES.COM)

Sagecliffes Residences, 344 Silica Road Northwest, Quincy, WA, 98848



Seller reserves the right to change the product offering without notice. Information provided herein was obtained from sources deemed reliable but cannot be guaranteed. Reader is encouraged to perform independent due diligence before relying upon content provided. E&EO. Equal Housing Opportunity.